

ACTIS™



**AUTOMATING ASSET MANAGER'S
WORKFLOW**

**ACTIS ERP UNIFIES ASSET DATA FOR SEAMLESS
PORTFOLIO MANAGEMENT**

Introduction of ACTIS ERP software

ACTIS ERP software is an innovative Renewables' Enterprise Resource Planning Platform dedicated to empowering stakeholders of renewables' assets, like [Asset Managers](#), [O&M service providers](#) and [Investors](#) with **full control of your portfolios**. A one-stop solution that helps you achieve the optimum performance of your assets, reducing both internal and external costs, streamlining your operations and consolidating Technical, Operational, Financial data and reporting into a single place.



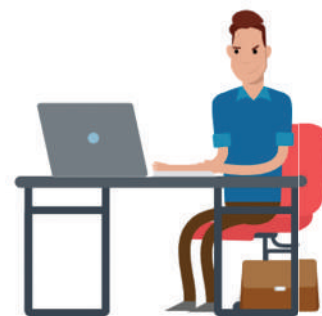
ACTIS ERP UNIFIES ASSET DATA FOR SEAMLESS PORTFOLIO MANAGEMENT

- 1** Uses sophisticated data analysis to automate crucial asset management activity, resulting in efficient, cost-saving decisions
- 2** Scales with your business across growing data and portfolio needs
- 3** Underpinned by the support of an inhouse expert team of engineers and software developers
- 4** Built based on the specific industry understanding and experience of Alectris

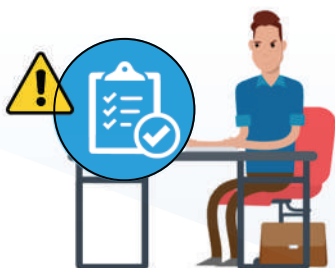


Automating Asset Manager's workflow

Most of asset managers for renewables struggle to track the incidents' costs or/and operational, technical and financial information. This can be resolved by using one centralized platform that provides an efficient way of managing the operations of your business - ACTIS ERP software.



HOW DOES ACTIS ERP WORK

**1**

An Asset Manager for renewables steps into action upon receiving a **compliance reminder** regarding the land lease renewal.

2

The Asset Manager **signs a new lease contract** and sends it to the accounting department for payment.

**3**

The payment is authorized by accountants and executed by a treasurer.

**4**

The payment is realized through accounting systems that are synced with ACTIS ERP platform. Therefore the **Asset Manager is always aware of the invoice status** (paid, pending, canceled).

Payment Status
Information

**5**

Using the data the Asset Manager can **create full reports** on payments with the click of a button.

